

THIS IS WHO WE ARE.



FACES & VOICES OF RECOVERY

ADVOCATE. ACT. ADVANCE.

RCCs and Accreditation

A National Perspective

presented by

Patty McCarthy
Chief Executive Officer
Faces & Voices of Recovery



Learning Objectives

- How are the terms Recovery Community Center (RCC) and Recovery Community Organizations (RCO) related?
- What is the Association of Recovery Community Organizations (ARCO)?
- What is the Council on Accreditation of Peer Recovery Support Services (CAPRSS)?
- What is accreditation? What happens after accreditation?
- Benefits of ARCO Membership and CAPRSS Accreditation
- How to move the field forward based on national standards

Who are you? Check ALL that apply

- Recovery community center (RCC) participant
- Recovery community center (RCC) staff / leader
- Clinician
- Prescriber (of medications for opioid use disorder)
- Recovery support staff / peer worker / volunteer
- Scientist (including scientists in training)
- Recovery advocate
- Healthcare decision maker (e.g., hospital leadership, department of health, etc.)
- Person with lived experience (regarding recovery)
- None of the above

Which of the following is true for you? Check ALL that apply

- I am aware of specific outcomes measures that can be used to track recovery (e.g., the BARC-10)
- I am aware that individuals can go through a peer-support certification process
- I am aware that RCCs and RCOs go through a rigorous process in order to become accredited
- I have personally been involved in / participated in / led an RCO/RCC accreditation process
- I know where to find reports and research to document needs for recovery peer workforce
- Learning about the accreditation process for RCCs can inform my decision to link my patients with these programs

What's Working Well?

- A growing national network of Recovery Community Organizations
- Data collected from over 60,000 peer support records shows that peer support works!
- Documented need for even more peer support specialists in our behavioral healthcare systems
- Accreditation of peer support providers is on the rise and another step towards sustainability



What is ARCO?

- Unites and supports the growing network of local, regional and statewide recovery community organizations (RCOs)
- Links RCOs and their leaders with local and national allies
- Provides training and technical assistance to groups
- Helps build the unified voice of the organized recovery community



ARCO

Association of
Recovery
Community
Organizations

<https://facesandvoicesofrecovery.org/arco/>

10 Best Practices of RCOs

1. Non-profit Organization
2. Led and Governed by the Recovery Community
3. Primary Focus is Recovery from Substance Use Disorders
4. Grassroots
5. Participatory Process
6. Peer Recovery Support Services
7. All Pathways towards Recovery
8. Diverse, Equitable, and Inclusive Policies, Practices, and Services
9. Recovery-Friendly Language
10. Code of Ethics and Grievance Policies

ARCO Members on the Map

- Local
- Regional
- Statewide
- National
- International



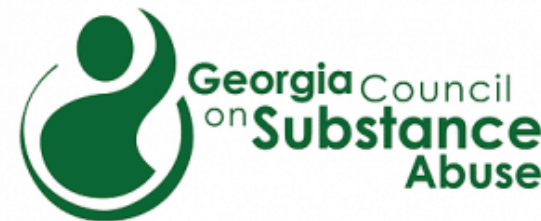
<https://facesandvoicesofrecovery.org/arco/arco-members-on-the-map/>

The Role of Statewide RCOs

- Networking and coordination
- Advocacy / policy representation
- Public awareness
- Training and technical assistance
- Organizing individuals and groups across the state
- Legislative advocacy



RECOVER WYOMING



The Role of Local and Regional RCOs

A **recovery community organization (RCO)** is an independent, non-profit organization led and governed by representatives of local communities of recovery.

These organizations

- organize recovery-focused policy advocacy activities,
- carry out recovery-focused community education and outreach programs, **and/or**
- provide peer-based recovery support services (P-BRSS).

MOST RCOs operate a recovery community center.
In some case they operate several RCCs.



Portland Recovery
Community Center



States with Networks of RCCs

Recovery Community Centers in Maine

✧ **Aroostook Recovery Center of Hope**
36 North Street, #1, Houlton, ME 04730
(207) 254-2213

✧ **Bangor Area Recovery Network**
142 Center Street, Brewer, ME 04412
(207) 561-9444

✧ **Bath Recovery Community Center**
97 Commercial Street, Bath 04530
(207) 389-4236

✧ **Boothbay Harbor Peer & Wellness Center**
35 School Street, Boothbay Harbor, ME 04538
(207) 315-6236

✧ **Coastal Recovery Community Center**
24 Lincoln Street, Suite 103, Rockland, ME 04841
(207) 691-3697

✧ **DownEast Recovery Support Center**
311 Main Street, Calais, ME 04619
(207) 952-9279

✧ **DownEast Recovery Support Center**
11 Free Street, Machias, ME 04654
(207) 259-6238

✧ **Lakes Region Recovery Center**
25 Hospital Drive, Suite E, Bridgton, ME 04009
(207) 803-8707

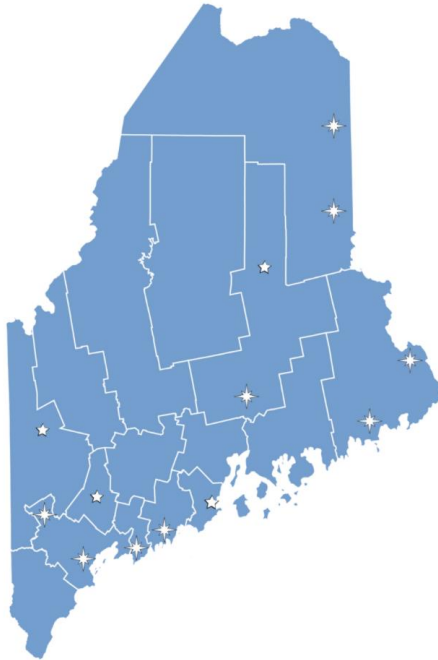
✧ **Larry Labonte Recovery Center**
412 Waldo Street, Rumford, ME 04276
(207) 418-4983

✧ **Pir2Peer Recovery Center**
1009 Central Avenue, Millinocket, ME 04462
(207) 723-1327

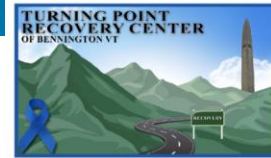
✧ **Portland Recovery Community Center**
468 Forest Avenue, Portland, ME 04103
(207) 553-2575

✧ **REST Center**
205 Main Street, Lewiston, Maine 04240
(207) 783-7378

✧ **Roads to Recovery Community Center**
1 Water Street, Caribou, ME 04736
(207) 493-1278



✧ Designates Maine Recovery Hub funded center



Turning Point Center of
Bennington, VT



Turning Point Center of
Central VT



Turning Point of Franklin
County, VT

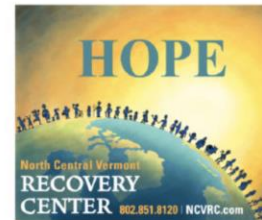


**Kingdom
Recovery
CENTER**

Kingdom Recovery Center,
St. Johnsbury, VT



Turning Point Center of
Rutland, VT



North Central Vermont



Turning Point Center of
Windham County, VT



Turning Point Center of
Addison County



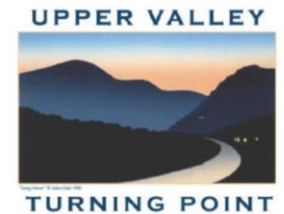
Turning Point Center of
Chittenden County



Journey to Recovery
Community Center,
Newport, VT



Turning Point Center of
Springfield, VT



Upper Valley Turning Point
**FACES & VOICES
OF RECOVERY**
ADVOCATE. ACT. ADVANCE.

https://portlandrecovery.org/maine-recovery-hub/#recovery_community_map

<https://www.vtrecoverynetwork.org/>

Benefits of Joining ARCO

- Public policy representation on Capitol Hill
- Annual Hill Day event
- Heightened national audience/profile
- ARCO National Leadership Summit
- Monthly ARCO member meetings via teleconference
- Members-only ARCO newsletter
- Discounts on webstore items, trainings, and RDP data collection platform
- Certificate of Membership
- Use of the *Association of Recovery Community Organizations at Faces & Voices of Recovery* name and logo





RDP

Recovery Data Platform

Data Tells the Story

For three years, we have been counting, measuring, scaling, and analyzing.

After 60,000 participant records, 10,000 Outcome and Relationship Rating Scales, 5,000 Brief Addiction Recovery Capital Indices, and literally millions of correlational datapoints, we have come to a conclusion.

Peer Recovery Support works!

<https://facesandvoicesofrecovery.org/rdp/>



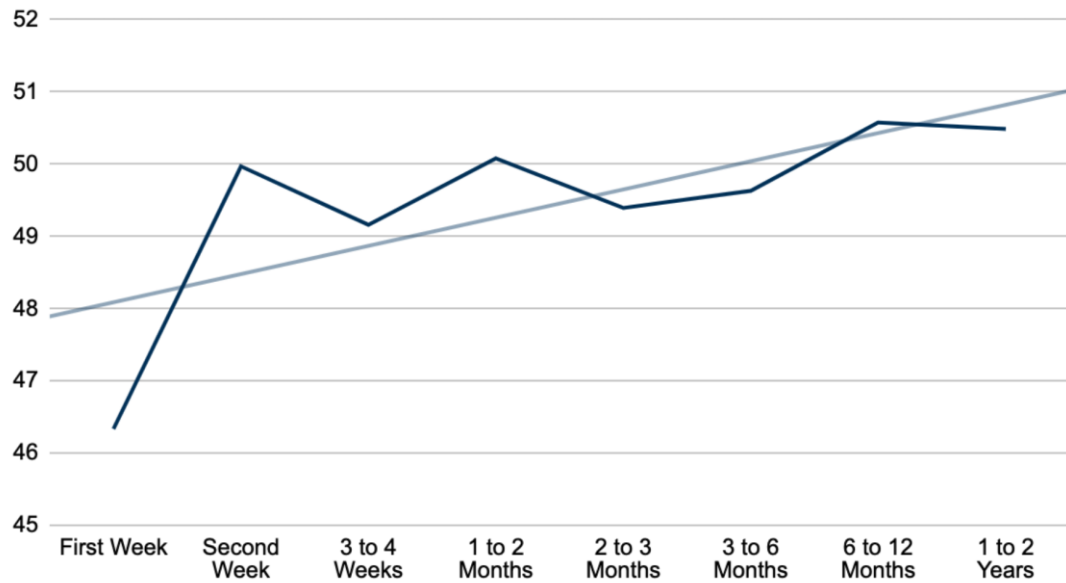
A critical tool for measurement of pace and performance in the recovery process. It is a must have for any peer related activity.

Recovery Data Platform

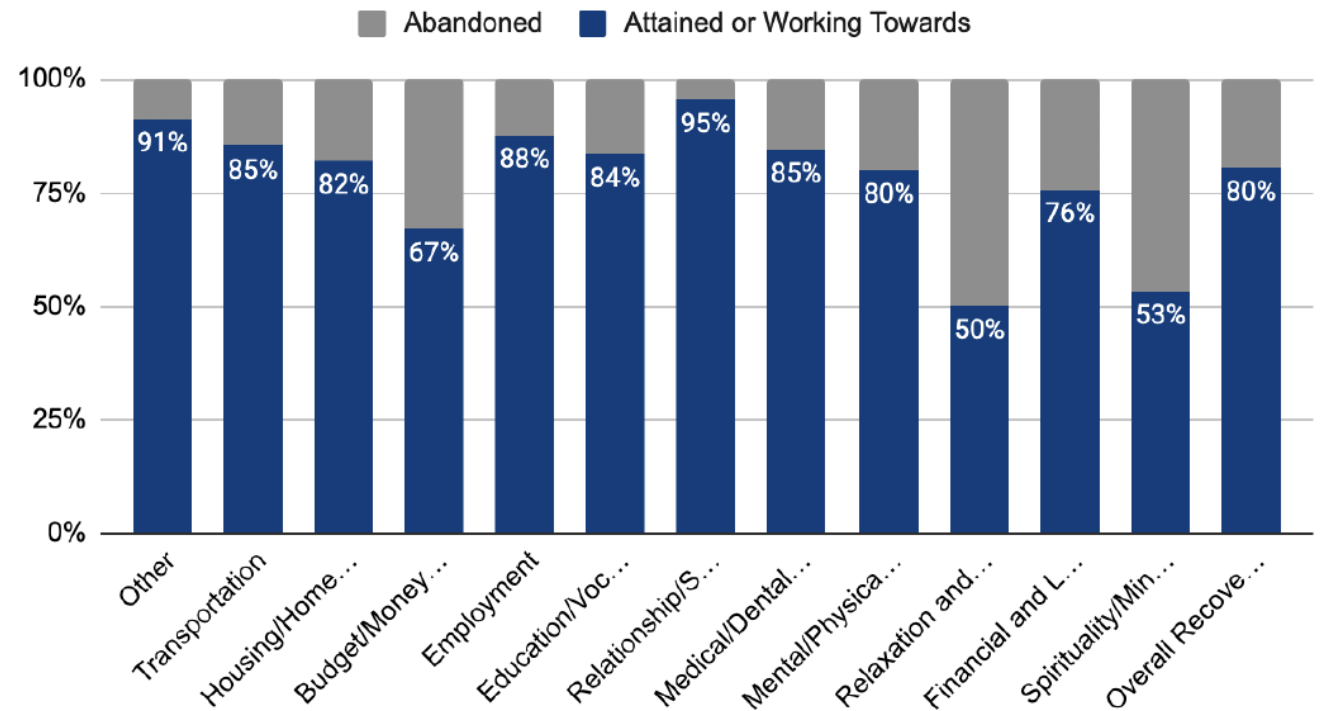
2020 Report

Recovery Management Planning

BARC-10 by Time Period (N= 4,999)



Goals by Category and Status (N= 4,691)



Huge Need for More Peer Support

2020 Behavioral Health Workforce Report- Substance Abuse and Mental Health Services Administration

Occupation	Number in Workforce	Data Source	Number of Workforce Need Calculated		Additional needed to care for SMI/SUD population
			SMI/ SED	SUD	
Peer Support Specialists	23,507	Texas Institute for Excellence in Mental Health, 2017	777,326	349,519	1,103,338



Recommendation: Increase the peer professional workforce and make these providers an integral component of behavioral health services. Require insurers to reimburse for peer professional services



Best Practices for Recovery Support

Peer Workers: Core Competencies

- https://www.samhsa.gov/sites/default/files/programs_campaigns/brss_tac/core-competencies_508_12_13_18.pdf

Recovery Housing: Best Practice and Suggested Guidelines

- <https://www.samhsa.gov/ebp-resource-center/recovery-housing-best-practices-suggested-guidelines>

Collegiate Recovery Programs: Standards

- <https://collegiaterecovery.org/standards-recommendations/>

Recovery High Schools: Accreditation Standards

- <https://recoveryhschools.org/accreditation/>

RCO and other Peer Support Programs: Accreditation Standards

- <https://caprssi.org/>

Certification vs. Accreditation

- Certification is given to individuals, and accreditation applies to organizations.
- Certification is a voluntary process in which an individual demonstrates proficiency or competence on standardized criteria that relate to a specific field.
- Accreditation is a voluntary process in which an **organization's** operations are evaluated according to established qualifications or standards.



CAPRSS

Council on
Accreditation of
Peer Recovery
Support Services

ADVOCATE. ACT. ADVANCE.

CAPRSS



Mission is to identify and support excellence in the delivery of services and other activities by peer recovery support services (PRSS) programs.



CAPRSS is a full-service program, offering asset-based™ accreditation services.



Our approach is consultative rather than prescriptive, providing insights and strategies to help PRSS programs achieve and succeed.



The only accrediting body in the US for organizations solely focused on addictions-related peer recovery support services.



“Stamp of approval” for potential funding sources.

CAPRSS offers services for

- emerging organizations seeking information and resources to develop their programs;
- established organizations looking to improve depth, breadth, scope, and quality of the peer services they provide, and preparing to seek accreditation;
- “accreditation-ready” organizations applying for accreditation;
- accredited organizations; and
- state and other governmental entities seeking to support and assure the quality of peer recovery support services within their jurisdiction.

The Accreditation Standards

Taxonomy

4 Functional Areas

7 Core Domains

30 Core Standards

150 criteria

Elements of Performance

Four Functional Areas

Principles

- Recovery Principles, Culture, and Climate
- Ethical Framework for Service Delivery

People

- Peer Leadership Development
- Peer Supervisor Development

Practices

- Governance and Program Oversight
- Management Systems

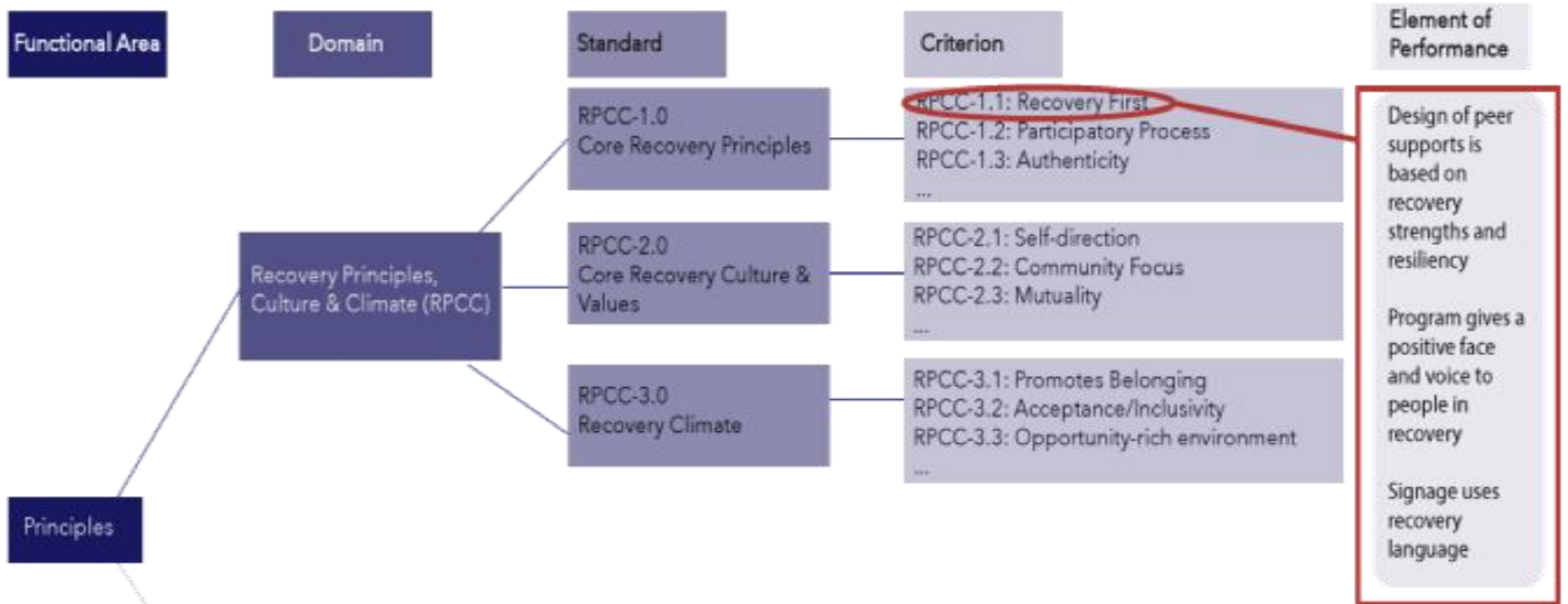
Performance

- Peer Support Capacity: Core Competencies

Domain

Recovery Principles, Culture and Climate		
RPCC-1.0	Core Recovery Principles	The program is grounded in the values of the recovery community -- both local community and the national movement.
RPCC-2.0	Core Recovery Culture and Values	The program incorporates key practices that support and enhance recovery.
RPCC-3.0	Recovery Climate/ Environment	The program establishes a welcoming climate that is conducive to / facilitates personal recovery.

Example



Breakdown

RPCC 1.0 The program is grounded in the values of the recovery community — both local community and the national movement.

Criteria

- RPCC 1.1 Keeps recovery first, placing recovery at the center of the effort.
- RPCC 1.2 Uses **participatory processes** to engage people who are in and seeking recovery.
- RPCC 1.3 Maintains the **authenticity** of peers helping peers, drawing on the lived and shared experience of addiction and recovery.
- RPCC 1.4 Builds **leadership** and capacity among members to guide and direct the program.

Breakdown cont.

- RPCC 1.5 - Recognizes, acknowledges, affirms, and celebrates peer contributions.
- RPCC 1.6 - Welcomes, affirms, and embraces cultural diversity and inclusion
- RPCC 1.7 - Encourages and promotes being of service / giving back to the community.
- RPCC 1.8 - Engages in advocacy activities.

Participatory Process

- Method(s) to gain the active participation of individuals in an idea generation or decision-making process.
- The primary goal of participatory process is to create productive dialogue; often a second goal is to develop positive solutions.
- The specific method used depends on on what the participants want to achieve, the size of the group, the complexity of the ideas or issues being discussed, and the length of time available.

Recovery Climate

- Climate is akin to the weather within an organization — how warm or cool it is. Like the weather, organizational climate is the sum of “prevailing conditions,” including accessibility, openness, inclusivity, and diversity.
- An organization with a good climate attracts new people to its efforts; one with a negative climate is characterized by high turn-over, low participation, high levels of mistrust, and lack of momentum.



Ways to demonstrate

- **Documents**

- Policies and procedures documents
- Written Assessment reports including community perspective and voices
- Minutes or notes from at least 2 processes that are participatory involving people who are in and seeking recovery
- Recovery plan templates

- **Observation**

- Team process
- Posted code of ethics
- Participatory processes

- **Interview**

- Peer participants and family members
- Articulate core recovery principles
- Peer Leaders (peer workers)
- Participation from various aspects of PRSS
- Management / executive staff
- Stakeholder

- **Survey**

- Focus groups

- **Tracer**

- Listening for examples of principles in action

Quotes

"The benefits of CAPRSS accreditation have been great. We are able to leverage our status as an accredited organization when we meet with policy makers and advocate for RCOs, and we are taken more serious in the state agency world as well." - **Honesty Liller, CEO, The McShin Foundation**

"The CAPRSS accreditation process has benefited our organization and has provided clear guideposts as we move forward in the expansion of peer recovery services in South Carolina. It is certainly a worthwhile endeavor. We look forward to ongoing collaboration with the CAPRSS team and we know we will continue to learn from them as we grow as an organization. Thank you CAPRSS for all you do to further the peer recovery cause." - **Richard Jones, MA, MBA, LCAS, CCS, CCDP, CAI, Executive Director, FAVOR Greenville**

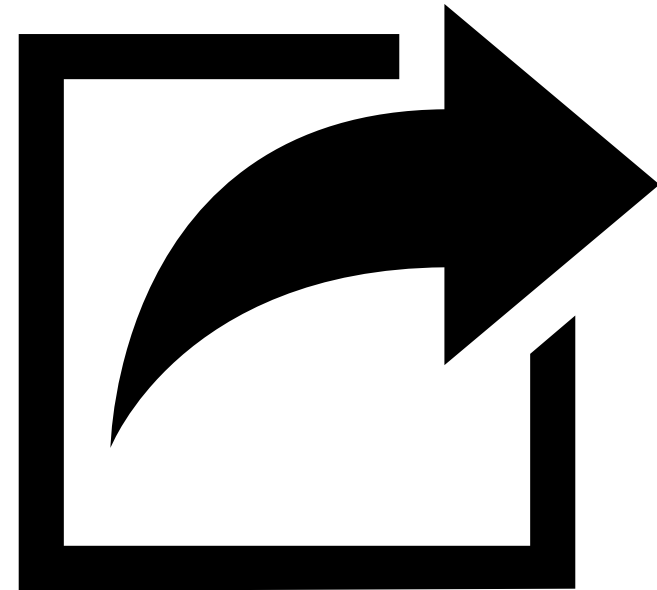


What happens after accreditation?

- Annual update of Organizational Profile
- Follow up with Performance Improvement Plan
- Involvement with sharing practices in Learning Community
- Reaccreditation

Moving the field forward

- Sustainability
- Assuring fidelity to peer models
- Peer Leadership Development
- Recovery-Ready Communities



Which of the following is true for you?

Check ALL that apply

- I am aware of specific outcomes measures that can be used to track recovery (e.g., the BARC-10)
- I am aware that individuals can go through a peer-support certification process
- I am aware that RCCs and RCOs go through a rigorous process in order to become accredited
- I have personally been involved in / participated in / led an RCO/RCC accreditation process
- I know where to find reports and research to document needs for recovery peer workforce
- Learning about the accreditation process for RCCs can inform my decision to link my patients with these programs

We are here to help



**FACES & VOICES
OF RECOVERY**

ADVOCATE. ACT. ADVANCE.

OUR PROGRAMS



CAPRSS

Council on
Accreditation of
Peer Recovery
Support Services



RDP

Recovery
Data
Platform



NRI

National
Recovery
Institute



ARCO

Association of
Recovery
Community
Organizations



**FACES & VOICES
OF RECOVERY**

ADVOCATE. ACT. ADVANCE.

Contact Us

Patty McCarthy

Chief Executive Officer

pmccarthy@facesandvoicesofrecovery.org

For CAPRSS questions:

Joseph Hogan-Sanchez

Director of Programs

jsanchez@facesandvoicesofrecovery.org

For ARCO questions:

Marianna Horowitz

Senior Project Coordinator

mhorowitz@facesandvoicesofrecovery.org

www.facesandvoicesofrecovery.org

www.caprss.org



FACES & VOICES OF RECOVERY

ADVOCATE. ACT. ADVANCE.